



**Armed with a small pot or tray, a small paintbrush and a magnifying glass, there's a whole world of mini-beasts waiting to be discovered...**

Bugs can be found everywhere, but a great place in the Tame Valley is the grassy meadows or undergrowth in woodland.

Dark damp spots under rocks and logs are a good hunting ground for things like worms, woodlice and spiders. You'll find critters like ladybirds, caterpillars and aphids on flowers, plants and leaves.

- A paintbrush to gently brush the bug into your tray will give you a chance to take a closer look with your magnifying glass.



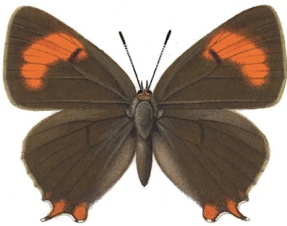
Millipede



Bee



Ladybird



Butterfly



Snail



Plant bug



Woodlouse



Earthworm



Slug



Fly



Centipede



Beetle

Scan the QR code



Don't leave your bugs in the tray too long, and always put your bug back carefully where you found it and replace rocks and logs.

**Always wash your hands afterwards!**

